

Textile Selection

Whether you want vinyl or fabric...are on a budget, have a specific need or just want a fresh new look...KFI has an option for you.

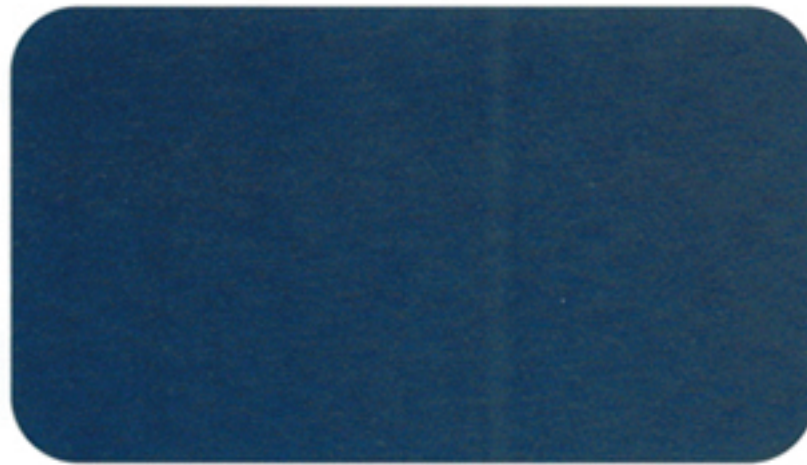
Need it quick?

Not a problem! We stock 20 standard vinyls and 57 fabrics that can be shipped in less than 2-3 weeks - many ship in 2-3 days. See our In-Stock section on pages 4-10. We also offer "grade-in" programs with Spradling, Guilford of Maine, Mayer and Momentum textiles.

KFI can also accomodate COM (Customer's Own Material)

Give us a call, we will help you choose the upholstery that best meets your needs.

BASIC VINYL



9301-Navy

Vinyls:

Material:
PVC Skin/Polyester Non-Woven Back
Weight:
18 oz. Per Lineal Yard
Flammability:
CA Bulletin 117, Section E; UFAC Class 1;
BIFMA Class F-1



9202-Ebony



9607-Red



9107-Yellow



9705- Green



9704-Hunter



9305-Blue



9402-Light Grey



9106-Brown



9703-Forest



9403-Grey



9102-Almond



9302-Wedgwood



9602-Port

GRADE 3 VINYL

Spradling International - Floridian



3306-Deep Navy



3204-Red Wine



3407-Cedar



3705-Rose Grey



3906-Black



3512-Grey

Material:
Weight:
Abrasion:
Flammability:

100% Vinyl Surface, 100% Polyester Backing
27 oz. Per Lineal Yard
Wyzenbeek / CFFA-1, Federal Standard 191 A, Method 5304
CA Bulletin 117, MVSS 302